

1

2

3

4

A

A

B

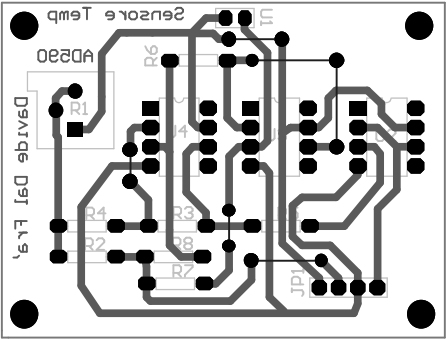
B

C

C

D

D



	ENGINEER:	TITLE: Sensore di temperatura con AD-590 range 0-31 gradi	
	PCB DESIGNER:	Davide Dal Frà	
	DATE: 02/07/2007	PART NO.:	REV:
	FILE NAME: PCB_ad_590.PCBDOC	DWG NO.:	SCALE:

1

2

3

4